

## Computational linguistic opportunities at the Koninklijke Bibliotheek

### Our data may just hold the answers to your research questions:

Come and discover millions of pages of content, fully digitised or digital-born and available for exploration and analysis (conditions of use may apply):

- ▶ Delpher collection:
  - > 12 million newspaper pages (1614 – 1995)
  - > 3,2 million magazine pages (1636 – 2010)
  - > 375,000 digitised books (1477 – 2016)
  - 1,5 million typewritten ANP radio bulletins (1937-1984)
- ▶ Digital Library of Dutch Literature (DBNL) (900-2016)
  - >5 million pages
  - TEI
  - manually corrected texts
- ▶ Dutch Parliamentary Proceedings (1814 - 1995)
- ▶ the Dutch Web Archive
- ▶ Linked Open Data environment (in beta)
  - Dutch bibliography
  - Thesaurus of author names
  - Thesaurus of organisations
  - Subject thesauri
- ▶ and more every month

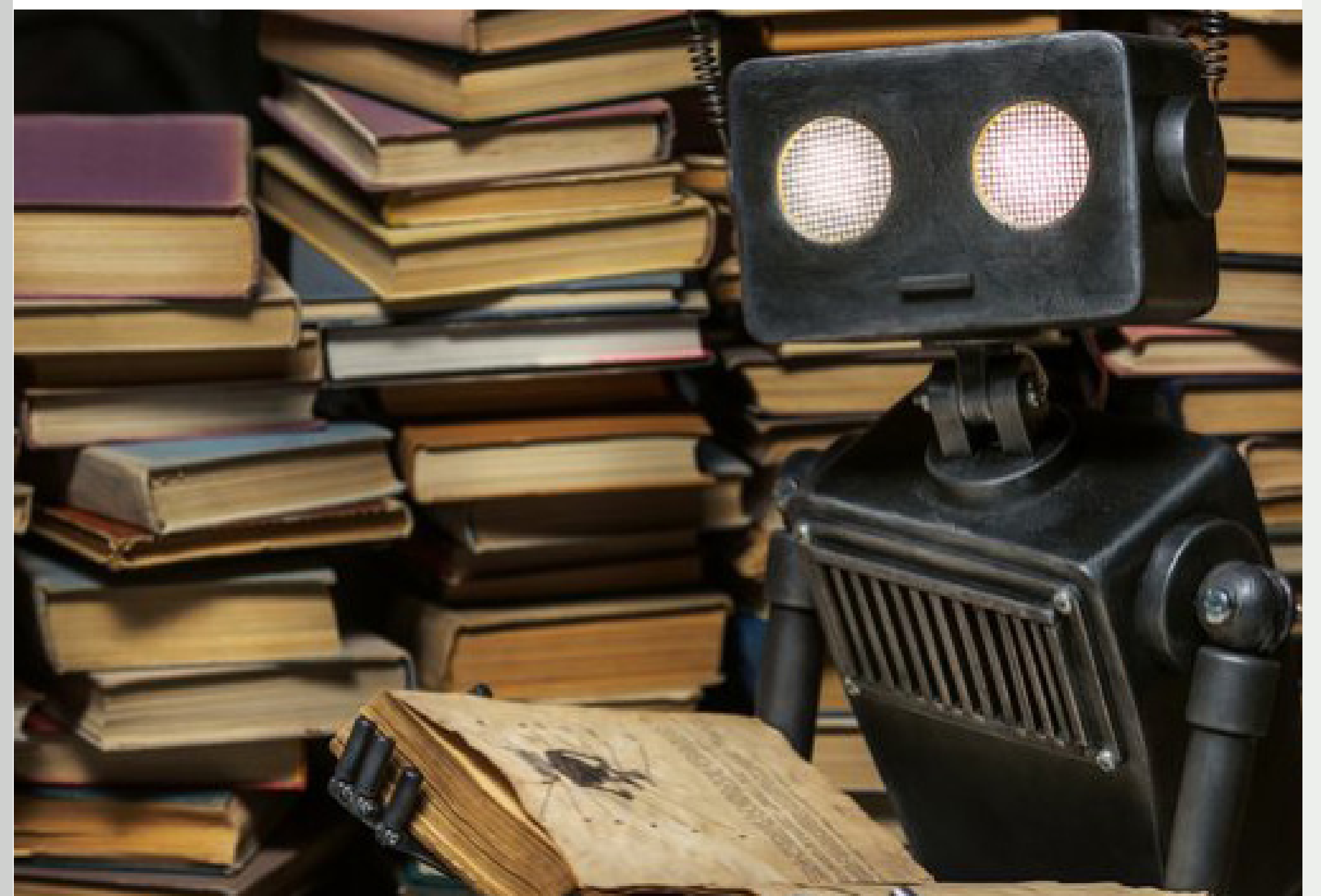
For all data and more, go to <http://kb.nl/en/dataservices> and <http://data.bibliotheken.nl/>

### Our KB Lab is a platform to facilitate your research with our data:

Come and discover the ever-growing suite of datasets and tools for digital research:

- ▶ ngram dataset (i.c.w. PoliticalMashup)
- ▶ >4500 pages of ground truth
  - PAGE format
  - Books, newspapers and parliamentary papers
- ▶ NER resources trained on historical newspapers
- ▶ Ochre – toolbox for OCR post-correction

For all datasets, tools and more for digital research, go to <http://lab.kb.nl>



### Our KB researcher programmes can provide the opportunity you need to come and work with our data and team:

- ▶ KB Fellowship programme
- ▶ KB Researcher-in-residence programme
  - o 6 months, 0,5 fte fully paid
  - o Work with a developer & advisor digital scholarship
  - o Apply via open call

Next to this, we're open to participate in new research projects.

### Our Digital Humanities team is your guide to this treasure trove:

- ▶ Website: [kb.nl/en/digitalhumanities](http://kb.nl/en/digitalhumanities)
- ▶ E-mail: [dh@kb.nl](mailto:dh@kb.nl)
- ▶ Twitter: [@KBNLResearch](https://twitter.com/KBNLResearch)

